



SAMPLING RUFFED GROUSE FOR WEST NILE VIRUS

PLEASE READ THOROUGHLY PRIOR TO YOUR HUNT. IF YOU HAVE ANY QUESTIONS ABOUT THE SAMPLING PROCESS, PLEASE CONTACT JULIE MELOTTI AT Melottij@michigan.gov or 517-336-5042.

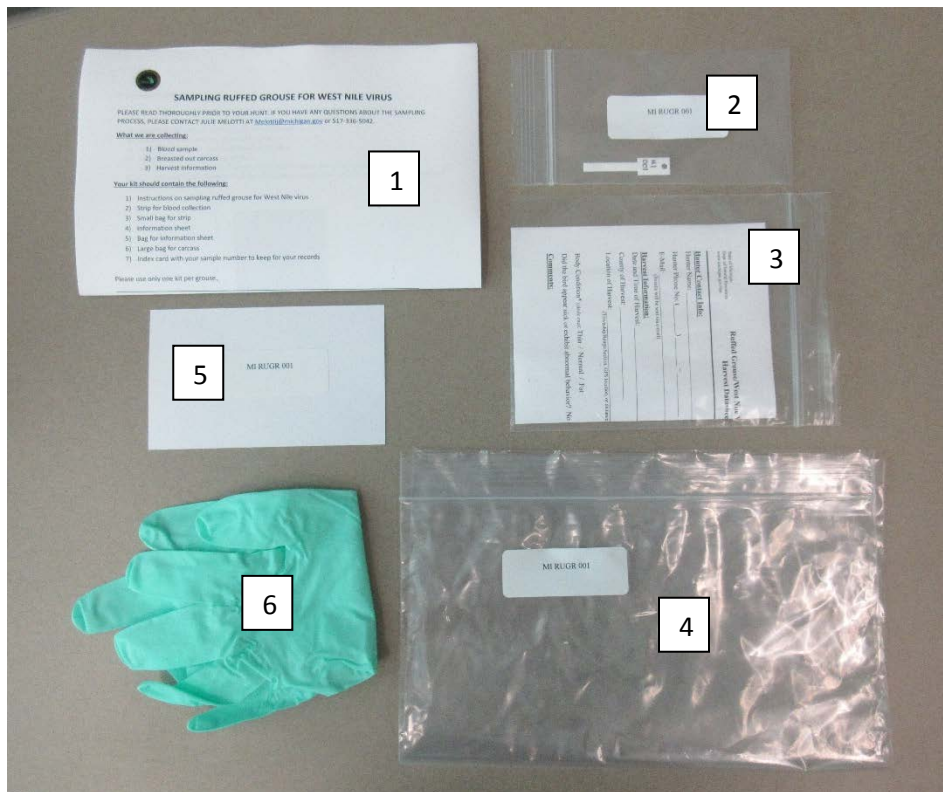
What we are collecting:

- 1) Blood sample
- 2) Breasted out carcass
- 3) Harvest information

Your kit should contain the following:

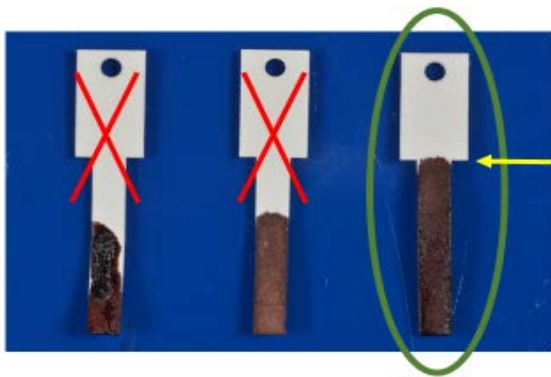
- 1) Instructions on sampling ruffed grouse for West Nile virus
- 2) Strip for blood collection in small bag
- 3) Information sheet in bag
- 4) Large bag for carcass
- 5) Index card with your sample number to keep for your records
- 6) Disposable gloves

Please use only one kit per grouse.



Collecting the blood sample: If possible, this should be done within 30 minutes of harvest. This can be done before or after the carcass is breasted out.

- 1) Hold the wide end of the strip with your fingers.
- 2) Dip the narrow end of the strip into any fresh blood in the grouse. This blood can be from a wound, any organ or the body cavity.
- 3) Completely soak the strip until both sides are saturated with blood.
- 4) Do not cover the wide end of the strip with blood. If blood gets on the wide end of the strip, still send it in.
- 5) Place the blood-soaked strip in the small bag and seal it so that you can carry it during your hunt.



Absorb blood fully and cover both sides of the wick.

Drying out the strip:

THIS STEP IS CRITICAL TO TESTING. STRIPS MUST BE COMPLETELY DRIED ON BOTH SIDES.

- 1) After the day's hunt, remove the strip from the small bag.
- 2) Prop the strip against a pen or pencil to allow both sides to dry.
- 3) Leave the strip out at room temperature for 2 days.
- 4) Do not place the strip in direct sunlight.
- 5) After the strip has thoroughly dried for 2 days on both sides, place it back into the same small bag.
- 6) If you have harvested multiple birds, be sure to place the strip back into the small bag with the matching sample number.



in

Collecting the carcass:

- 1) Once the blood sample has been taken and the carcass has been breasted out, place the carcass in the large bag that the sampling kit came in and place it in your freezer.
 - 2) After the strip is dry and placed into the small bag, you can place it in the freezer bag with the grouse carcass.
-

Completing the information sheet:

- 1) Fill out the information sheet with the requested information as completely as possible.
 - 2) If you would like to receive updates on the project and test results on your bird, include your name and email address, clearly printed, on the information sheet.
 - 3) Place the completed sheet back in the small bag provided.
 - 4) Place the bag containing the information sheet in the freezer bag with the grouse carcass and blood sample.
-

YOUR COMPLETED SAMPLE SHOULD CONTAIN THE FOLLOWING IN THE LARGE BAG:

- Frozen grouse carcass
- Bag containing datasheet
- Bag containing the blood-soaked strip



DNR Collection of samples:

- 1) Once you have harvested a grouse and collected the sample for the project, email Julie Melotti at Melottij@michigan.gov.
- 2) Information about carcass collection will be provided.
- 3) We ask that you keep carcasses in your freezer until that time.

Testing of samples will not begin until the grouse season has ended. Final results may not be available for several months following the end of the season.

Be sure to retain the index card with your sample number on it. This will be the reference number that you can use to check the results of your grouse.

We are also interested in testing any sick or freshly dead ruffed grouse that are observed. If you encounter a sick or dead grouse, please contact Julie Melotti at 517-336-5042 or Melottij@michigan.gov or Tom Cooley at 517-336-5034 or CooleyT2@michigan.gov for further instruction.

THANK YOU FOR YOUR ASSISTANCE!